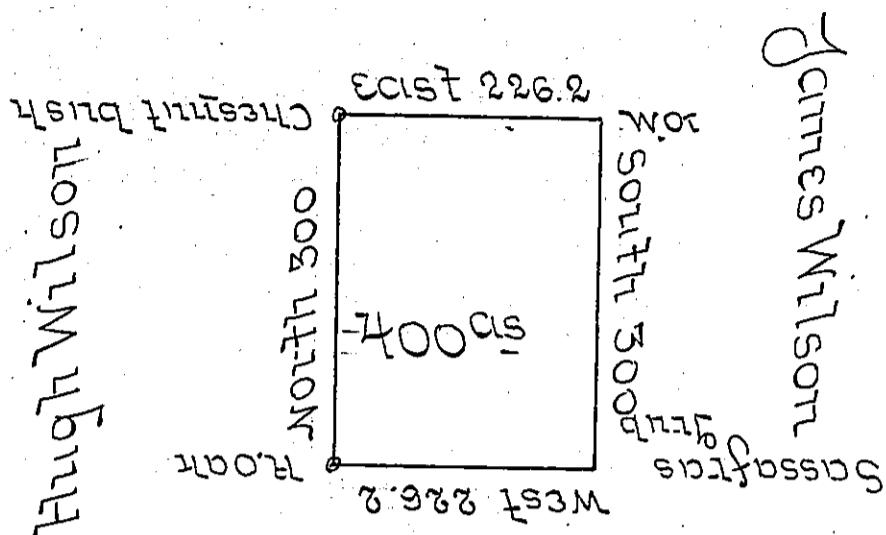


John Clarke



District Line

The Above is a draft of a Survey made March 10<sup>th</sup> 1795 in pursuance of a Warrant granted Hugh Means on the 4<sup>th</sup> day of Jan<sup>y</sup> 1794. Situate north west of the Ohio River on the Waters of Beaver Creek Adjoining Land granted to James Wilson Called (ob<sup>d</sup>.) Containing 400 Acres together with the usual Allow. of 6 Percent.

Tho Stokely D.S.

Daniel Brodhead Esq: Secy.

IN TESTIMONY that the above is a copy of the original remaining on file in the Department of Internal Affairs of Pennsylvania, made conformably to an Act of Assembly approved the 16th day of February, 1833, I have hereunto set my Hand and caused the Seal of said Department to be affixed at Harrisburg, this fourteenth day of February 1906.

*Isaac R. Pennington*  
 Secretary of Internal Affairs.